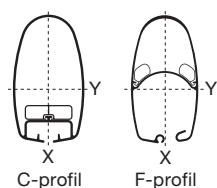
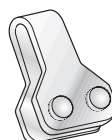


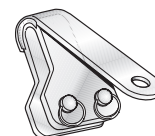
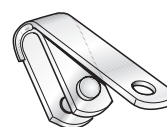
Förstags- och akterstagstogglar



C- och F-profiler



E = Enkel toggel D = Dubbel toggel



E = Enkel toggel D = Dubbel toggel

Wire dia. mm	Mastprofil	Art. nr.	Förstags- och akterstagstogglar			Akerstags- och triactictogglar	
			Bredd mm	Masthead max. toppbult dia. mm	Terminalbult (bussning) dia. mm	Art. nr.	Max. triactic-wire dia. mm
4	C156	517-001-01 E	30	10	8		
5	C156, C175, F176 C193, F194	517-001-01 E	30	10	8		
		517-003-01 D	30	10	10		
6	C156, C175, F176 C193, F194, C211 F212, C227, F228 C245, F246, C264 F265	517-002-01 E	30	12	10		
		517-006-01 D	30	12	10		
		517-002-02 E	39	12	10		
7	C175, F176, C193 F194, C211, C211 Tpr C227, C227 Tpr C245, F246, C 264 F265	517-004-01 E	30	14	12	517-012-01 E	6
		517-006-01 D	30	14	12	517-014-01 D	6
		517-048-03 E	36	14	12		
		517-048-01 E	36	14	14		
8	C245, F246, C285 F286, C245 Tpr C264 Tpr, C285 Tpr C245, F246, C264 F265, C285, F286 C304, F305 C175, F176, C193 F194, C211, F212 C227, F228	517-009-01 D	38	16	16		
		517-060-03 E	38	16	16	517-015-01 E	6
		517-009-01 D	38	16	16	517-016-01 D	6
		517-005-01 E	30	14	14	517-013-01 E	6
		517-006-01 D	30	14	12		
		517-005-01 E	30	14	14	517-013-01 E	6
		517-017-01 E	47	20	16		
10	C211, F212, C 227 F228 C245, F246, C264 F265, C285, F286 C304, F305	517-009-01 D	38	16	16	517-015-01 E	6
		517-017-01 E	47	20	16	517-016-01 D	6
		517-019-01 D	47	20	16		
		517-026-01 E	38	16	19	517-028-01 E	6
		517-027-01 D	38	16	19	517-029-01 D	6
12	C245, F246, C 264 F265, C285, F286 C304, F305, C321, F324	517-052-01 E	47	20	19		
		517-020-01 D	47	22	19		
		517-053-01 E	47	22	22		
14	C304, F305, C321, F324	517-058-01 D	49	22	22		

Tpr = Konad topp