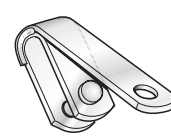
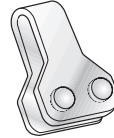
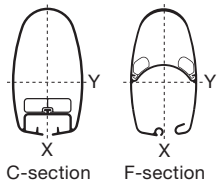


Forestay and backstay toggles



S = Single toggle D = Double toggle

S = Single toggle D = Double toggle

C-sections and F-sections

Wire dia. mm	Mast section	Art. No.	Forestay and backstay toggle			Backstay and triatic toggle	
			Width mm	Masthead max pin dia. mm	Term. pin (bush) dia. mm	Art. No.	Max. triatic-wire dia. mm
4	C156	517-001-01 S	30	10	8		
5	C156, C175, F176 C193, F194	517-001-01 S	30	10	8		
		517-003-01 D	30	10	10		
6	C156, C175, F176 C193, F194, C211 F212, C227, F228	517-002-01 S	30	12	10		
		517-006-01 D	30	12	10		
		517-002-02 S	39	12	10		
7	C175, F176, C193 F194, C211, C211 Tpr C227, C227 Tpr	517-004-01 S	30	14	12	517-012-01 S	6
		517-006-01 D	30	14	12	517-014-01 D	6
		517-048-03 S	36	14	12		
		517-048-01 S	36	14	14		
8	C245, F246, C285 F286, C245 Tpr C264 Tpr, C285 Tpr	517-009-01 D	38	16	16		
		517-060-03 S	38	16	16	517-015-01 S	6
	C245, F246, C264 F265, C285, F286	517-009-01 D	38	16	16	517-016-01 D	6
		517-005-01 S	30	14	14	517-013-01 S	6
	C175, F176, C193 F194, C211, F212 C227, F228	517-006-01 D	30	14	12		
		517-005-01 S	30	14	14	517-013-01 S	6
	10	C211, F212, C 227 F228	517-005-01 S	30	14	14	517-013-01 S
517-060-03 S			38	16	16	517-015-01 S	6
517-009-01 D			38	16	16	517-016-01 D	6
517-017-01 S			47	20	16		
517-019-01 D			47	20	16		
12	C245, F246, C 264 F265, C285, F286	517-026-01 S	38	16	19	517-028-01 S	6
		517-027-01 D	38	16	19	517-029-01 D	6
		517-052-01 S	47	20	19		
		517-020-01 D	47	22	19		
14	C304, F305, C321, F324	517-053-01 S	47	22	22		
		517-058-01 D	49	22	22		

Tpr = Tapered top