

## Mast section / Deck stepped Mast Base Location

Values applies to vertical mast. No rake or mast bend

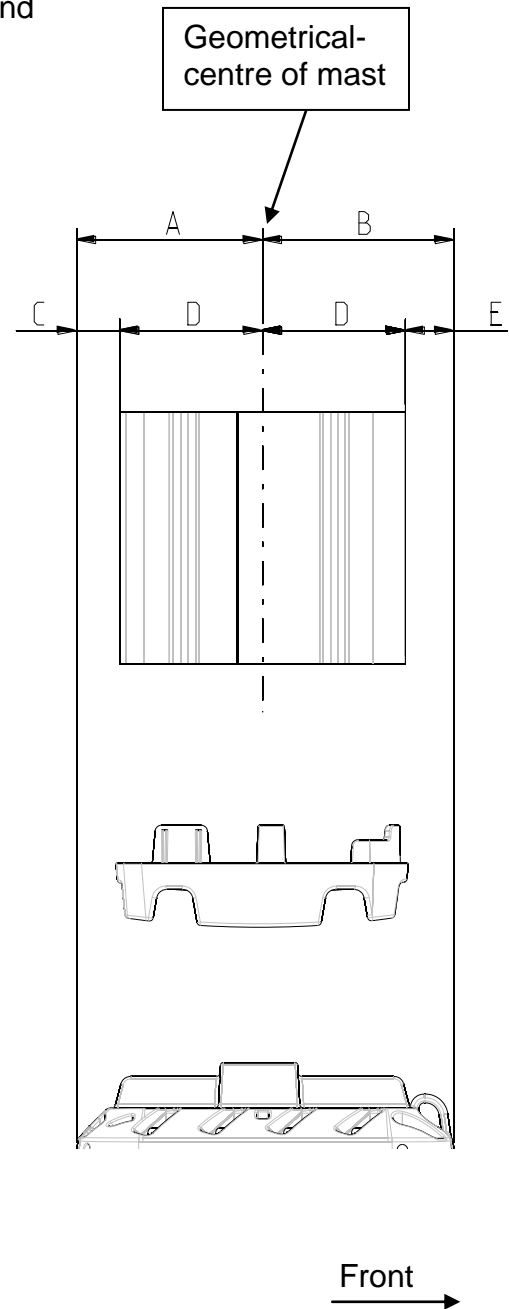
Mast	C156	C175/F176	C193/F194
<b>T-base</b>	510-157-01	510-157-01	510-157-01
A	97	113	116
B	128	112	109
C	19	25	19
D	78	88	97
E	50	24	13

Mast	C211 / F212	C227 / F228	C245 / F246
<b>T-base</b>	510-135-01	510-135-01	510-135-01
A	149	148	150
B	151	152	150
C	43	34	27
D	106	114	123
E	45	39	28

Mast	C211 / F212	C227 / F228	C245 / F246
<b>T-base</b>	510-136-01	510-136-01	510-136-01
A	146	146	146
B	130	130	129
C	40	32	24
D	106	114	123
E	24	16	6

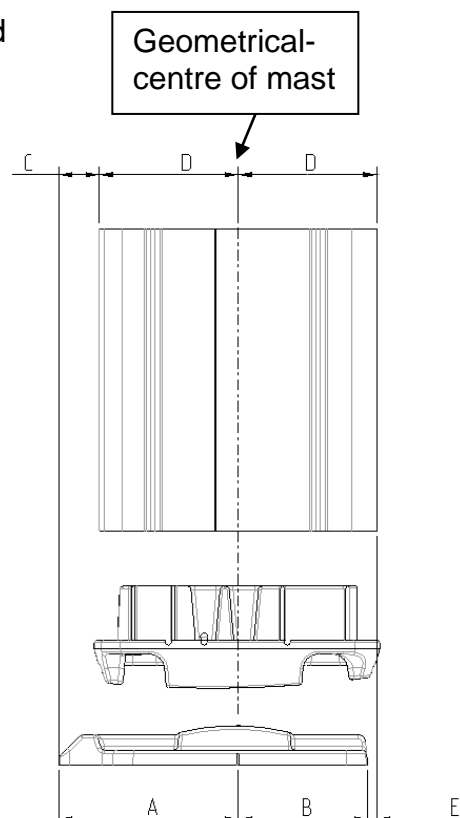
Mast	C264 / F265	C285 / F286	C304 / F305
<b>T-base</b>	510-142-01	510-142-01	510-142-01
A	189	188	190
B	200	200	198
C	56	46	39
D	132	143	153
E	67	56	44

Mast	C264 / F265	C285 / F286	C304 / F305
<b>T-base</b>	510-141-01	510-141-01	510-141-01
A	205	205	207
B	176	176	173
C	72	62	55
D	132	142	152
E	44	33	21

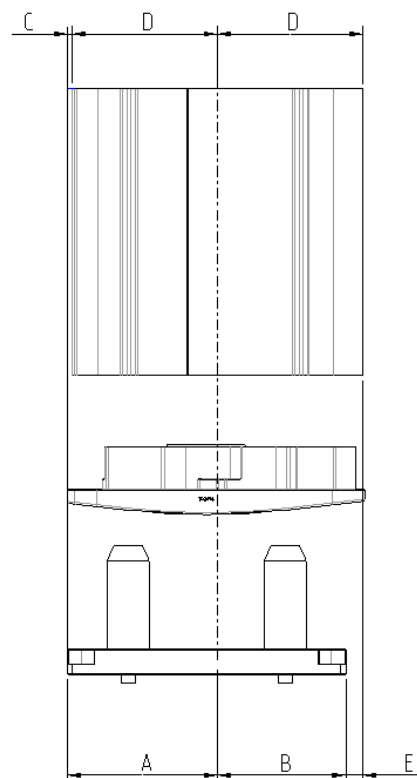


Values applies to vertical mast. No rake or mast bend

Mast	C321/F324	C365/F370
T-base	510-125-01	510-12501
A	237	237
B	171	171
C	77	56
D	161	183
E	10	12



Mast	F406
T-base	510-190
A	210
B	180
C	6
D	203
E	24



Front →